

# REINVENT THE WAY YOU WORK IN HEALTHCARE

Telemedicine

eHealth

Years of digital transformation

IoMT

mHealth

IoHT

happens now in Months

DATA IS NOW AT THE HEART OF EVERYTHING

2314 EB

amount of data projected  
in 2020 for Healthcare  
and Life Sciences<sup>1</sup>

80 MB

data generated by a  
single patient each year  
for imaging and EHR<sup>3</sup>

50 PB

data generated by  
hospitals per year<sup>2</sup>

15 to 20

average number of connected  
devices per US hospital bed<sup>4</sup>

Remote  
Patient  
Monitoring

Smart POC  
Testing

Virus  
Location &  
Tracing

Operating  
Theater  
Optimization

Wellness  
& Health  
Maintenance

ePhysician &  
ePrescriptions

Medical &  
Scientific  
Discovery

HEALTHCARE PROVIDERS MUST ADDRESS CRITICAL CHALLENGES TO SUCCEED



Aging population  
requiring more and  
complex care



Rise in novel  
infectious disease



More critical  
conditions due to  
delayed treatment

RISE IN  
DEMAND  
AND COST

DECLINING  
EXPERIENCE

Fragmented systems  
and records on  
outdated technology



Overburdened  
healthcare providers



Increasingly  
limited resources



EMPOWERING THE HEALTHCARE WORKPLACE WITH VDI SOLUTIONS

Providing secure and reliable  
access to patient records

Enabling clinical efficiencies, giving care teams access  
to record, report, and analyze data everywhere

Protecting and mobilizing  
medical image data

Managing storage and transfer of exponential growth  
of medical imaging data over a patient's life, even with  
increased demand and image fidelity

Accelerating medical insight  
and scientific discovery

Searching the genomes of millions of people sequenced  
around the world for links between genetics and disease



Pocketable



Grab and Go



Hybrid



Shared

Capture new data  
from new sources

Optimize when and where data  
is accessed and analyzed

Share, manage, and integrate insights  
to drive actions, everywhere

ENABLING HEALTHCARE PRODUCTIVITY WITH SEAMLESS SECURE ACCESS

The ideal VDI solution is not about the number of users,  
but the types of users and workloads they run:



**Task Workers**

Physicians, nurses, and staff with functions  
for office and specialized tasks such as  
telemedicine, database entry, market research  
client-server and browser-based applications



**Boost Efficiency**

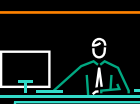


**Knowledge Workers**

Clinical, finance, customer service and IT  
teams with specialized functions such as  
office automation, unified communications,  
remote learning, collaborative groups and  
large-scale EHR



**Simplify Collaboration**



**Power Users**

Medical and scientific researchers and  
management teams with graphic and  
data-intensive workloads



**Strengthen Security**



**Save Money**

TRANSFORM YOUR HEALTHCARE WORKPLACE WITH BREAKTHROUGH VDI TECHNOLOGIES

**Compute Performance**

Optimized for data-intensive  
workloads the HPE ProLiant  
AMD-based servers built on the  
latest generation AMD EPYC™  
processors turbocharge  
applications and help  
secure critical data.

**Industry-Leading Expertise**

HPE Pointnext Services can  
help design and implement  
the right approach for you  
and transition your workplace  
from your now, to your future.



**HPE and AMD provide  
robust VDI solutions to  
match your specific use  
case, workload, scope,  
and deployment  
models.**

**Flexibility**

Designed for Citrix and  
VMware® environments,  
the HPE and AMD portfolio  
supports a wide spectrum of  
architectures to align  
with your requirements.

**Deployment Choice**

HPE gives customers choice in  
how they acquire and consume IT.  
Beyond traditional financing and leasing,  
HPE GreenLake offers VDI-as-a-service,  
a pay-per-use consumption model  
with the security and control of  
on-premises IT. AMD solutions  
now available on HPE  
GreenLake.



Integrated cost-effective and patient-centric healthcare to reinvent the way you work.  
Let HPE and AMD help you deliver operational efficiencies, enhanced clinical outcomes,  
and improved caregiver and patient experiences.

LEARN MORE AT

[hpe.com/info/workplace](https://hpe.com/info/workplace)

[hpe.com/us/en/solutions/amd.html](https://hpe.com/us/en/solutions/amd.html)

Make the right purchase decision.  
Contact our presales specialists.



Chat



Email



Call



Get updates

<sup>1</sup> Statista: Projected growth in global healthcare data volume 2020  
<sup>2</sup> Deloitte: Global health care outlook 2019  
<sup>3</sup> Frontiers in ICT: Better Patient Outcomes Through Mining of Biomedical Big Data 2018  
<sup>4</sup> Frost & Sullivan: Medical Device and Network Security 2019

© Copyright 2021 Hewlett Packard Enterprise Development LP. The information contained herein is subject to change without notice. The only warranties for Hewlett Packard Enterprise products and services are set forth in the express warranty statements accompanying such products and services. Nothing herein should be construed as constituting an additional warranty. Hewlett Packard Enterprise shall not be liable for technical or editorial errors or omissions contained herein.

AMD and the AMD Arrow logo are trademarks of Advanced Micro Devices, Inc. VMware is a registered trademark or trademark of VMware, Inc. and its subsidiaries in the United States and other jurisdictions. All third-party marks are property of their respective owners.

a00110338ENW, January 2021